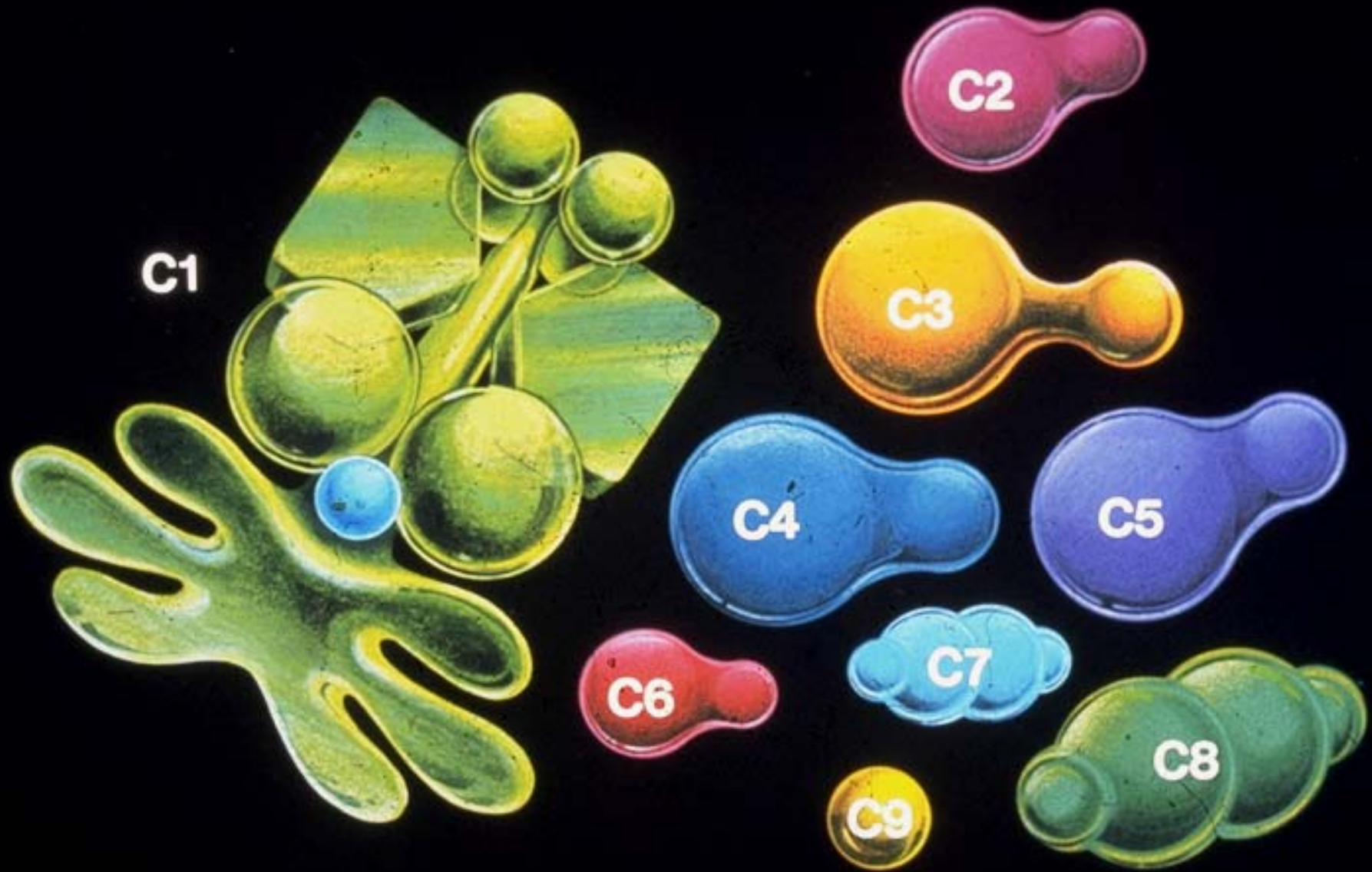


# SYSTEME DU COMPLEMENT



Dr Marie-José STELLING



C1

C2

C3

C4

C5

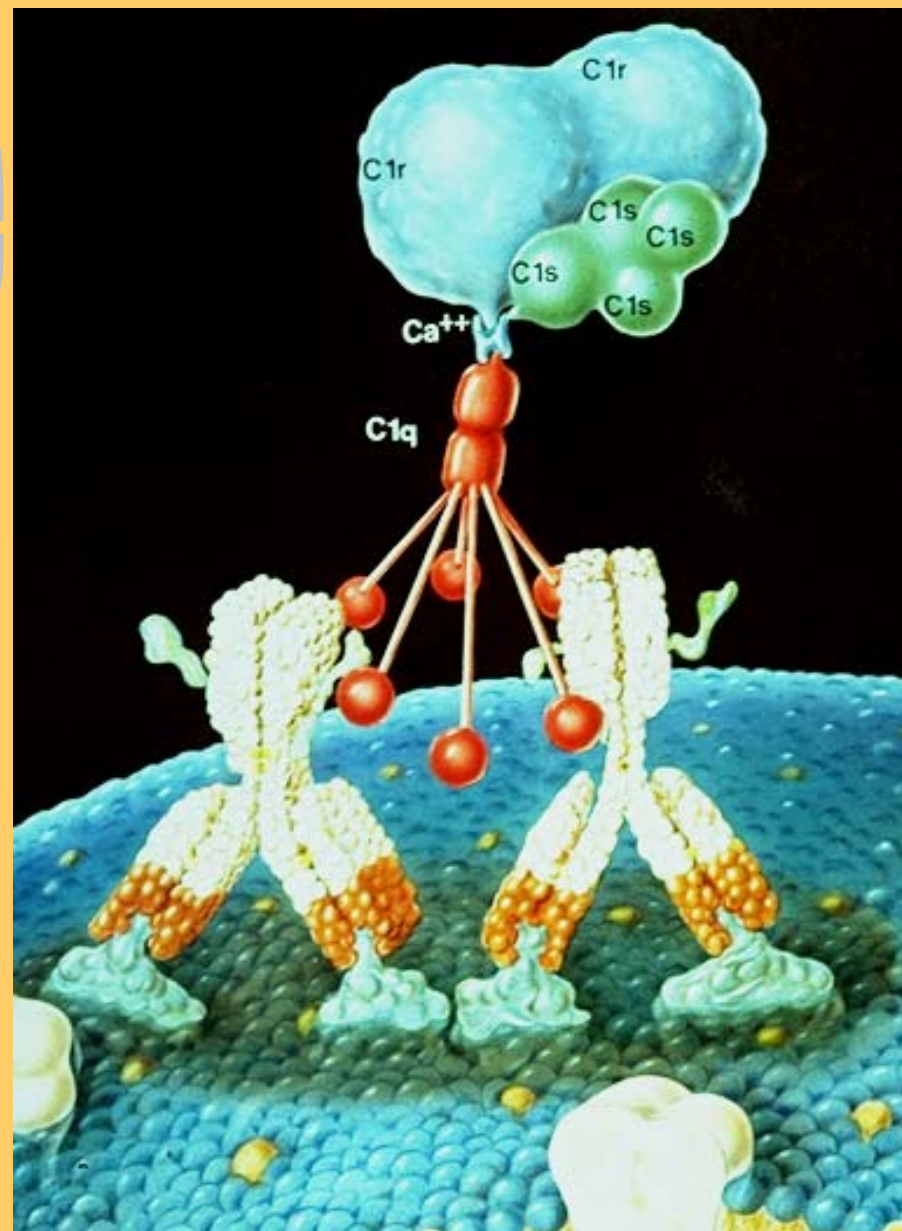
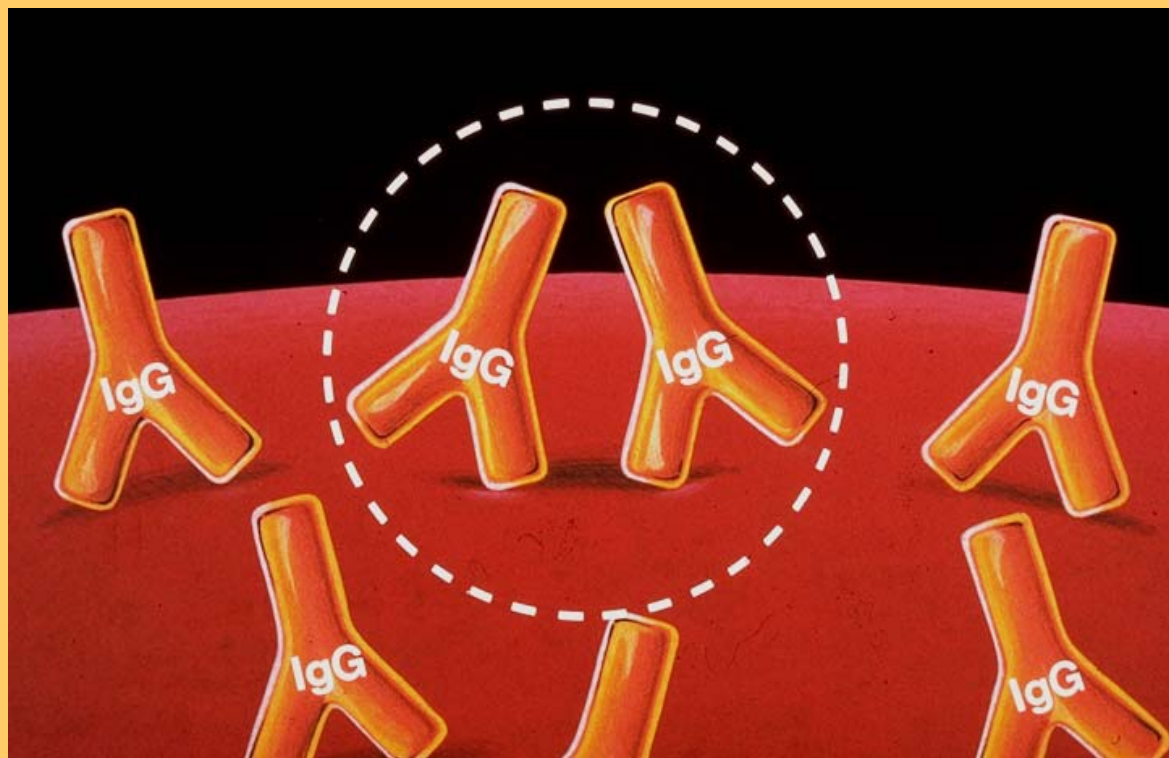
C6

C7

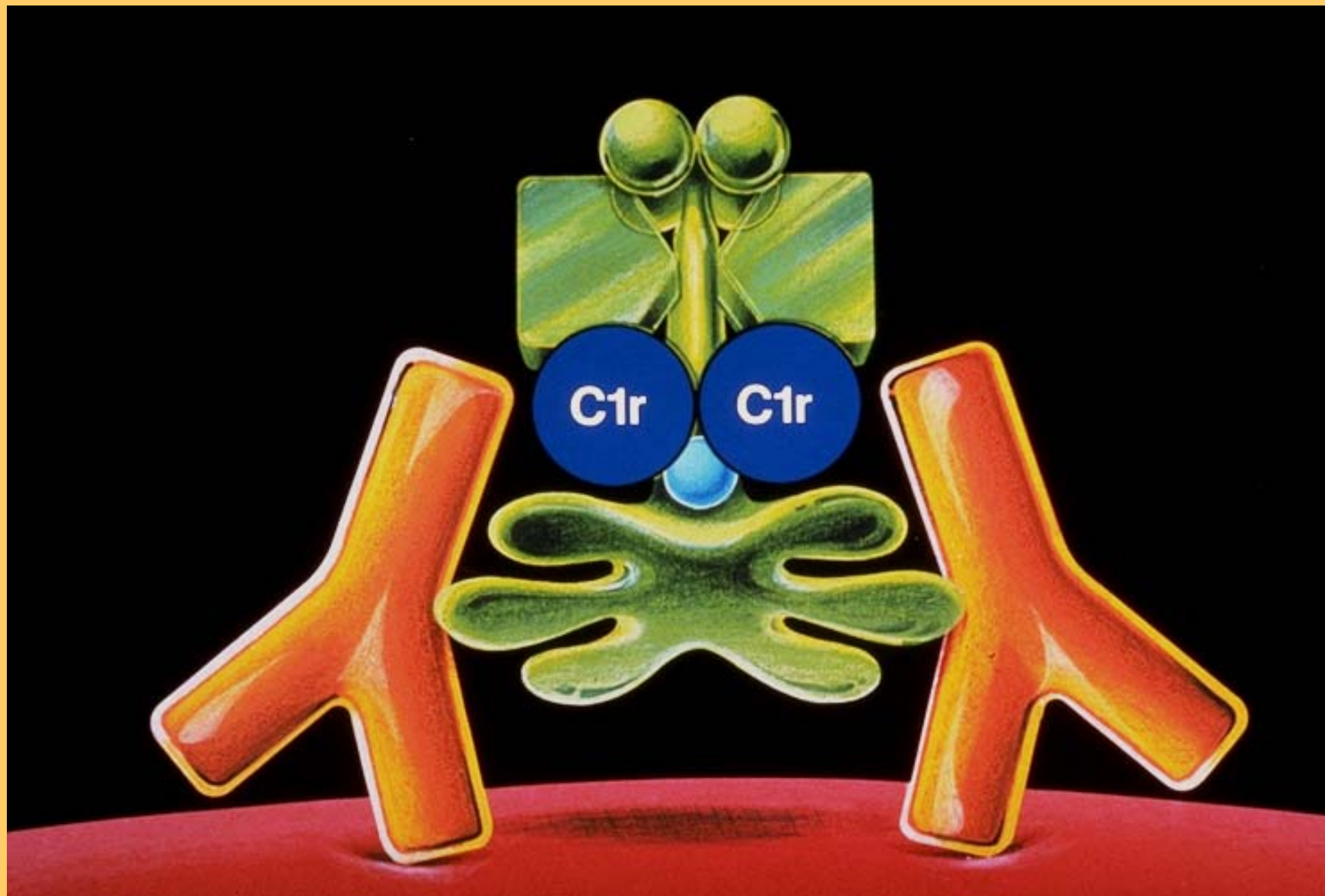
C8

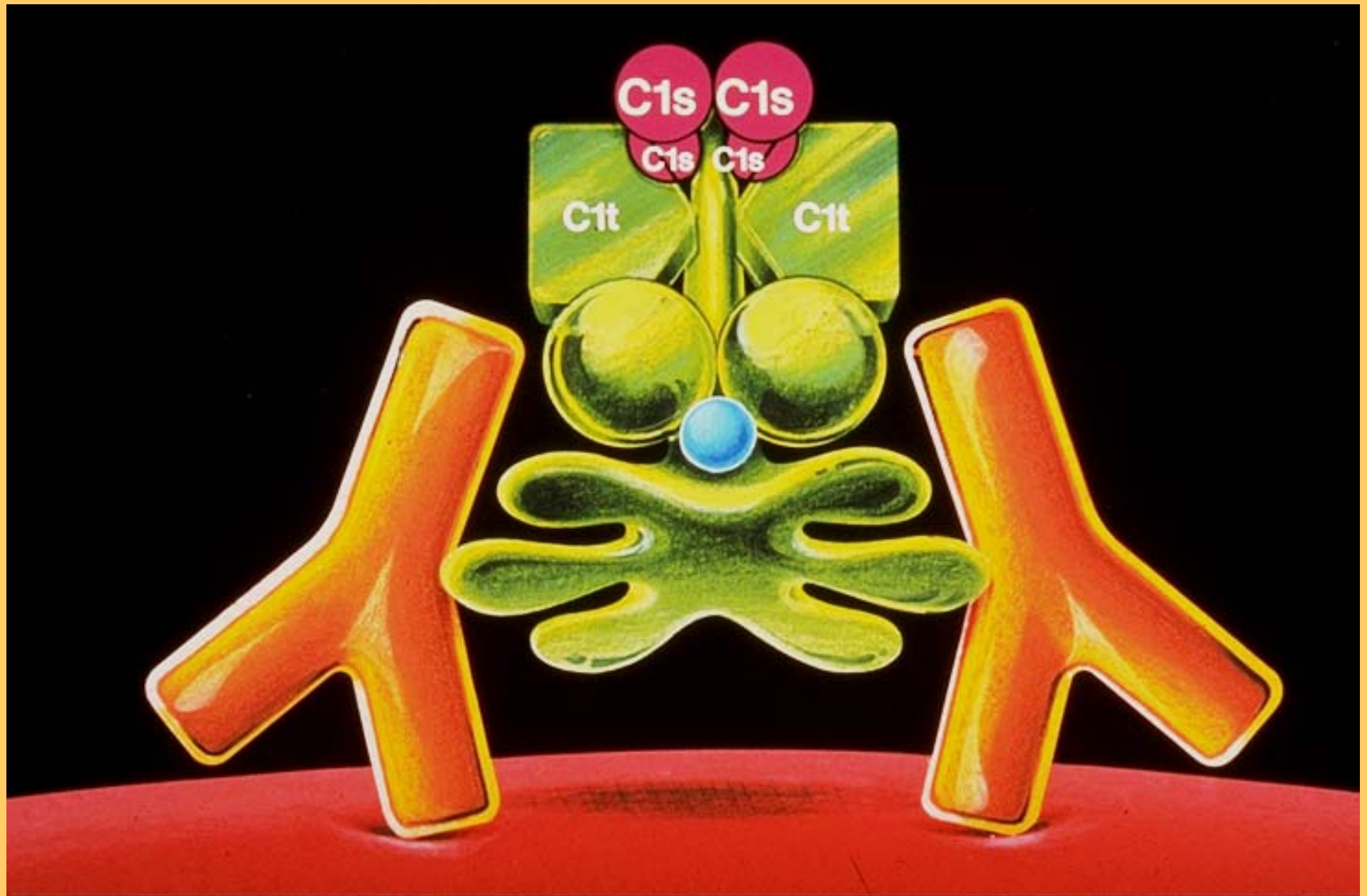
C9

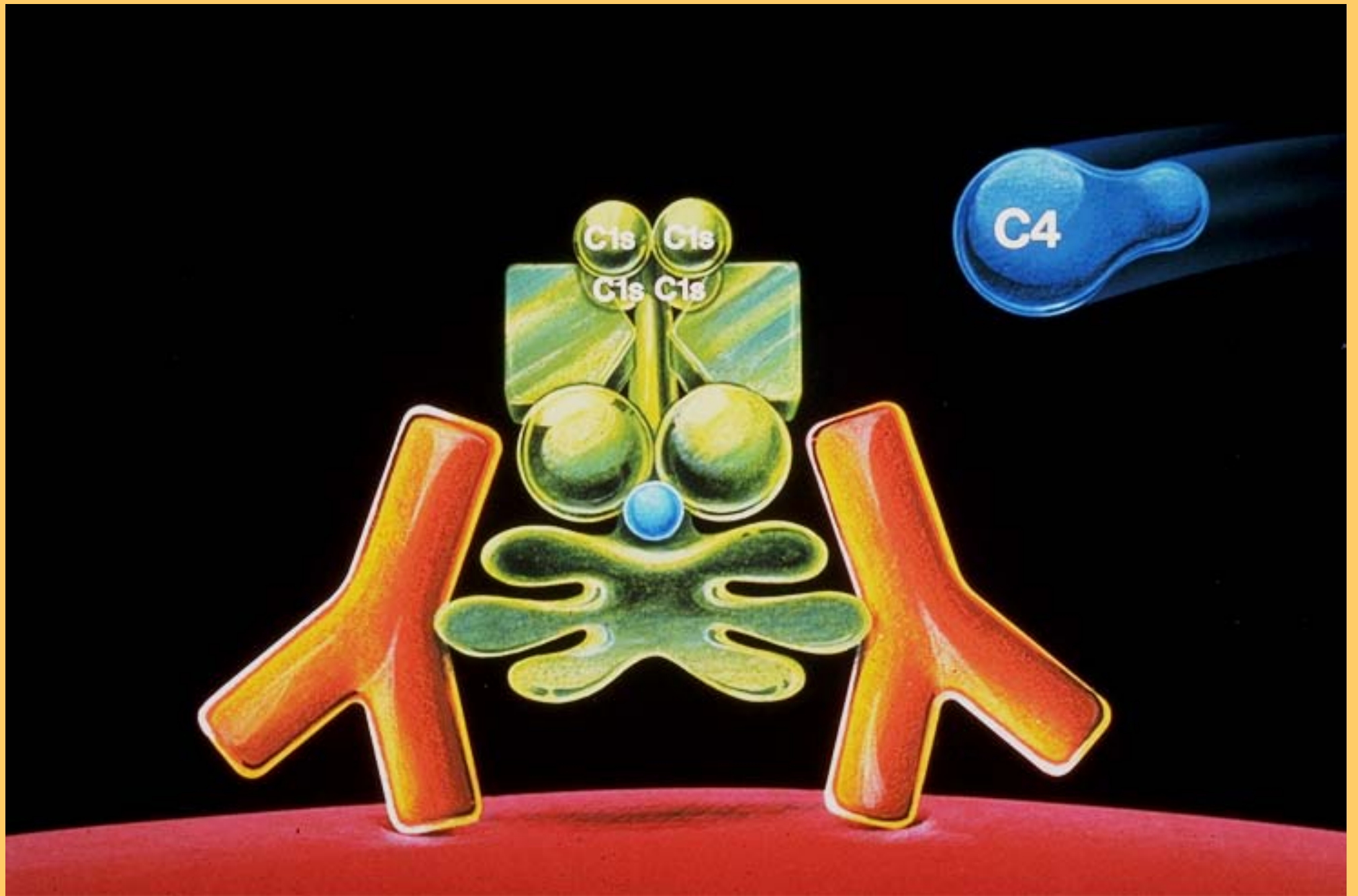
# Activation de la voie classique

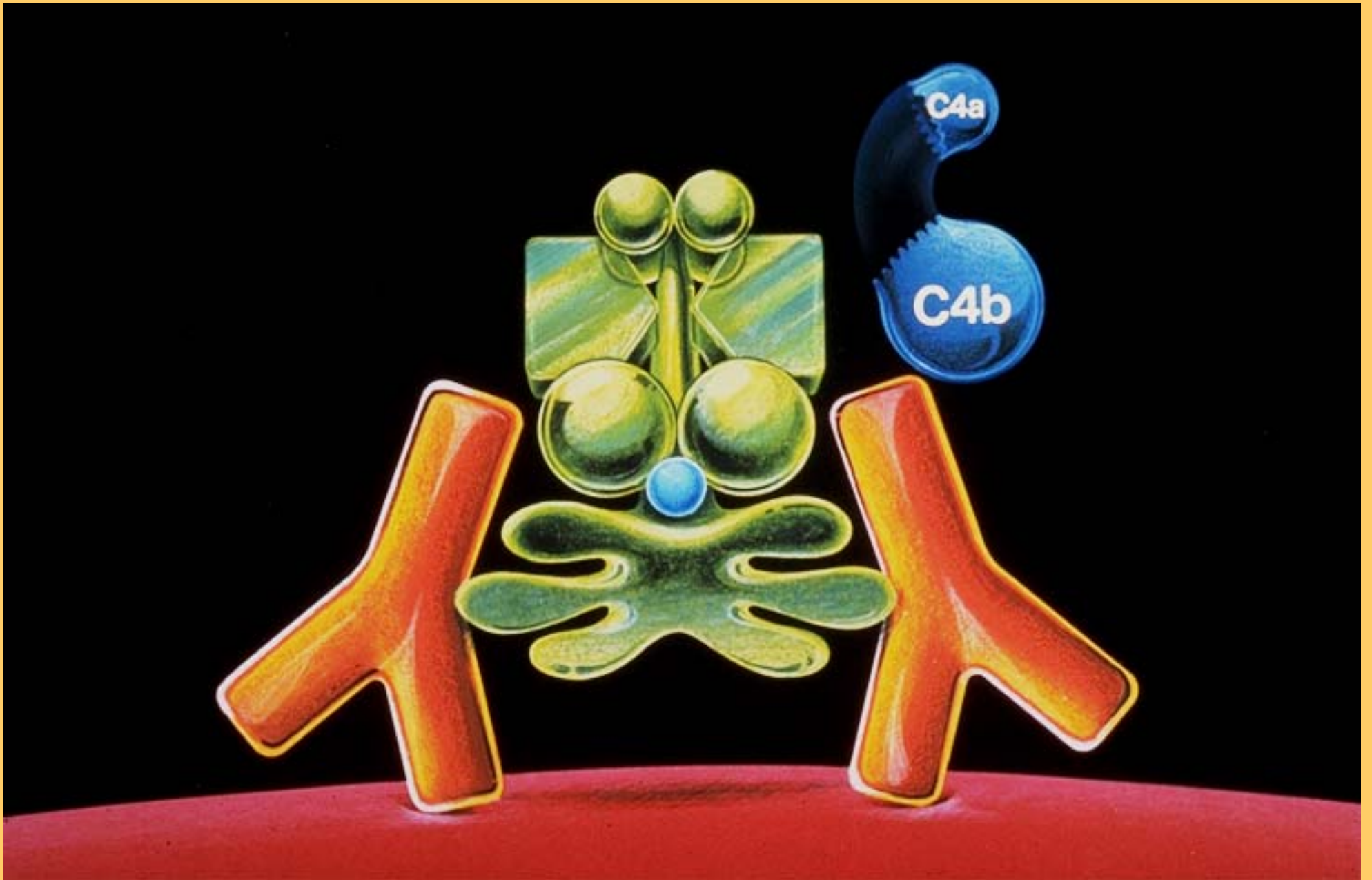




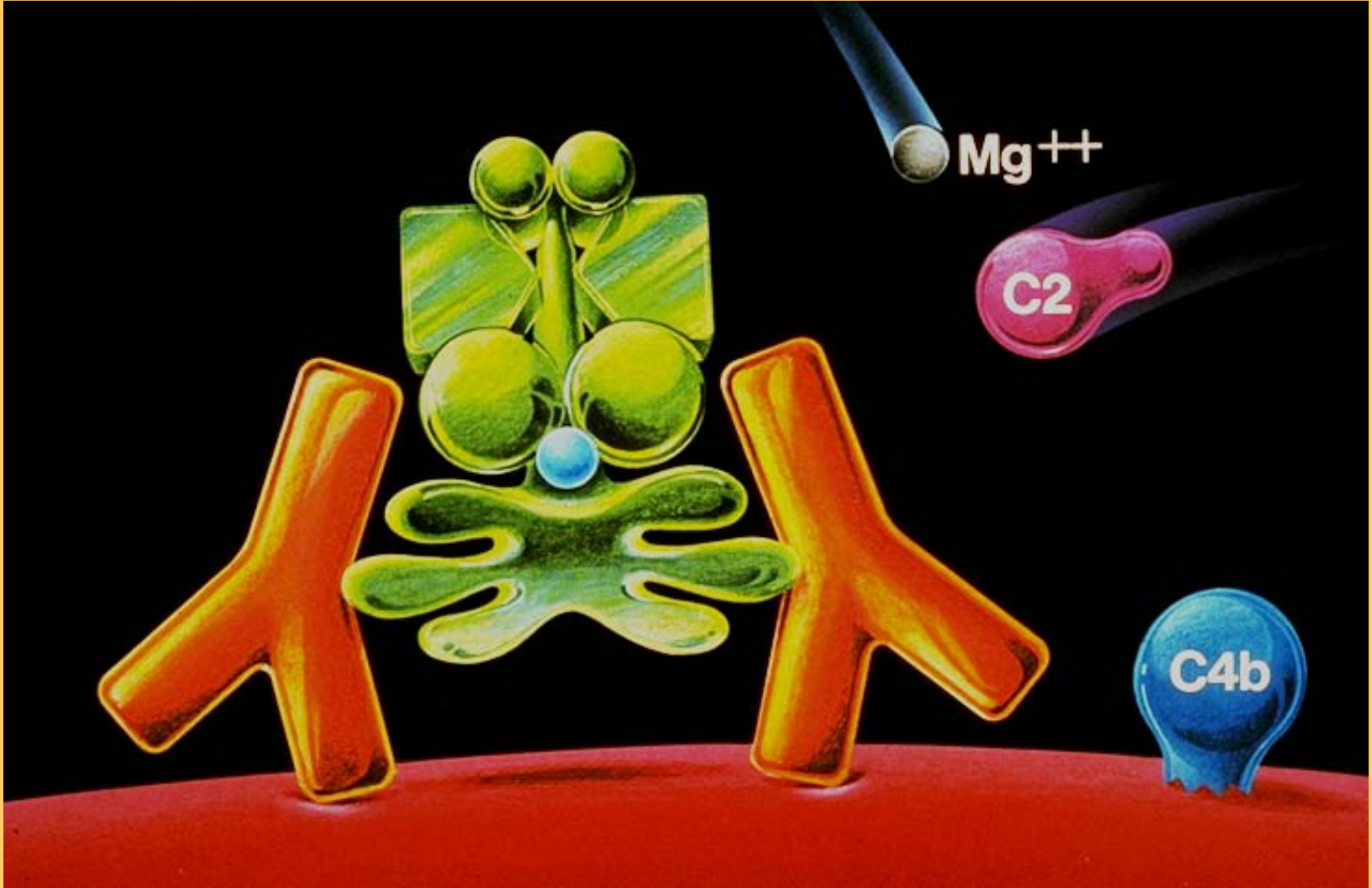


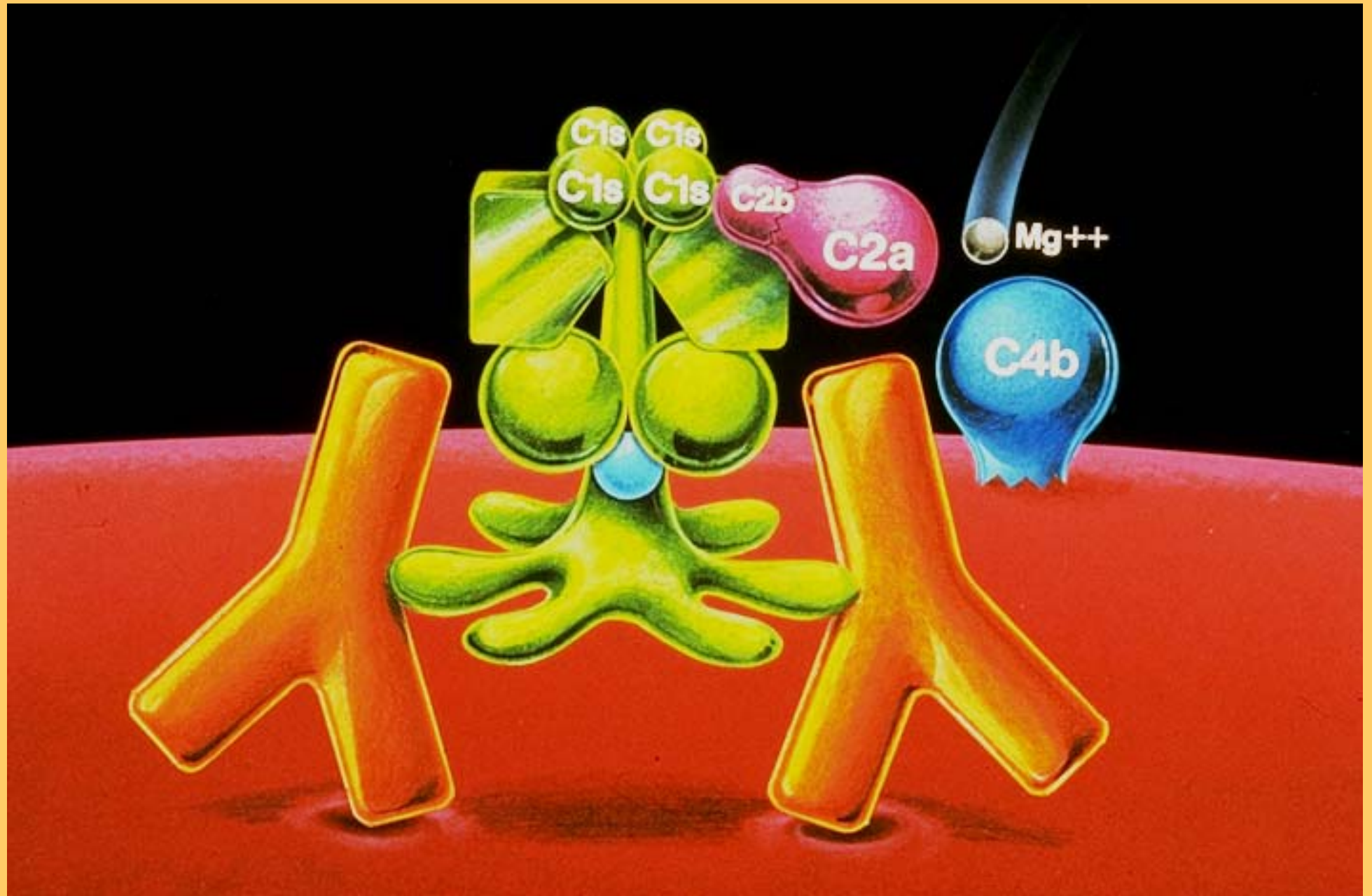


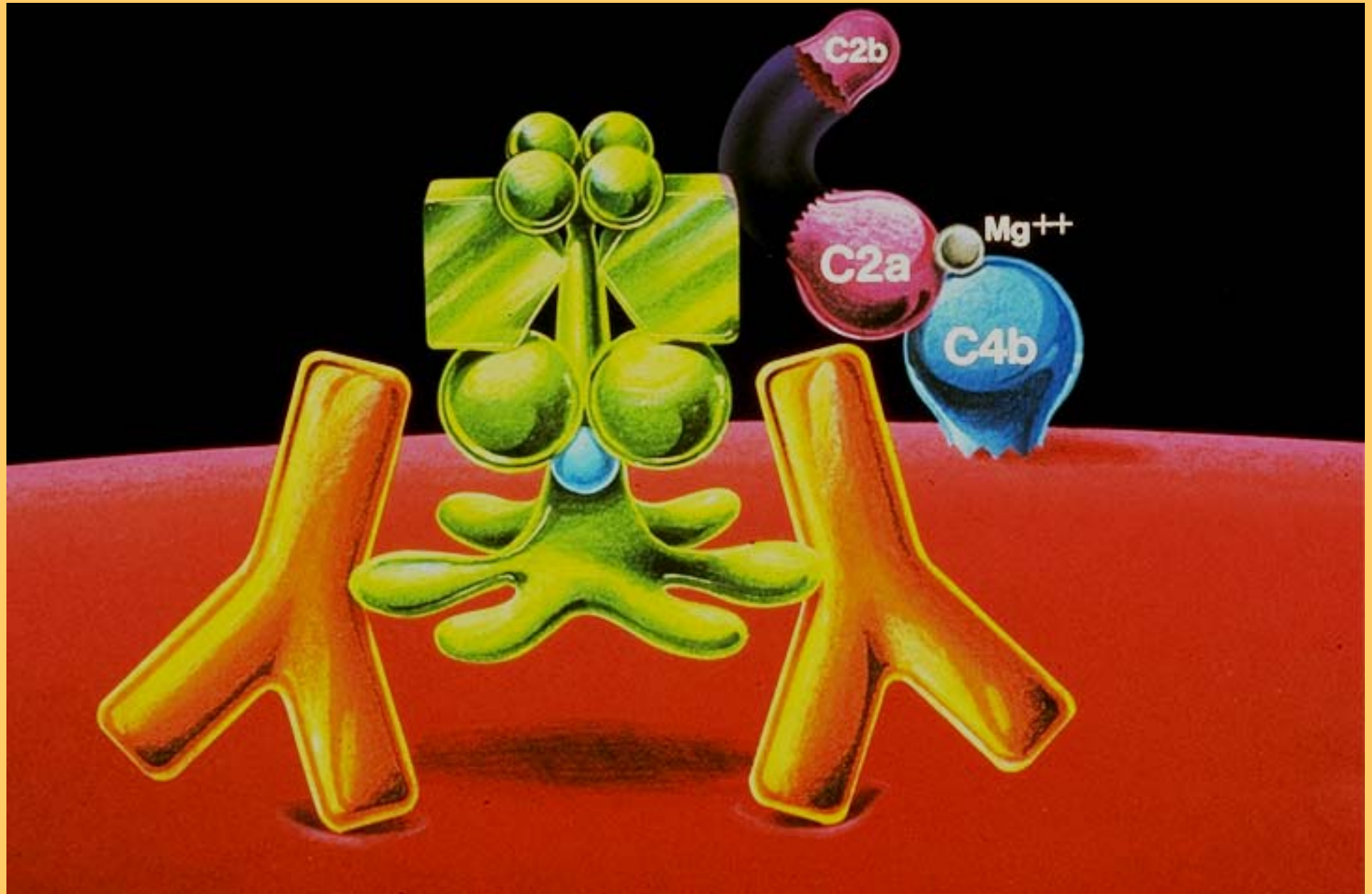


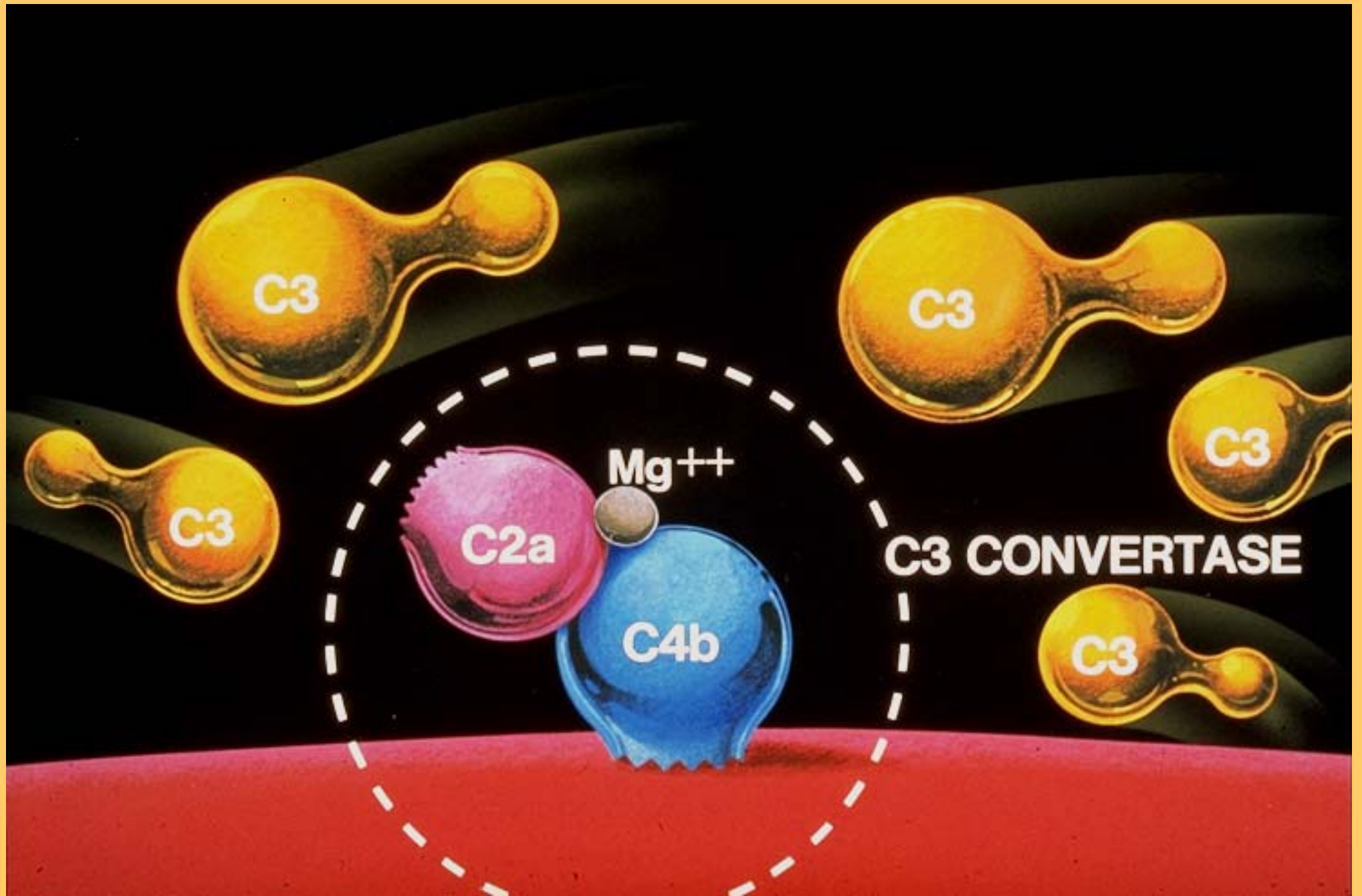


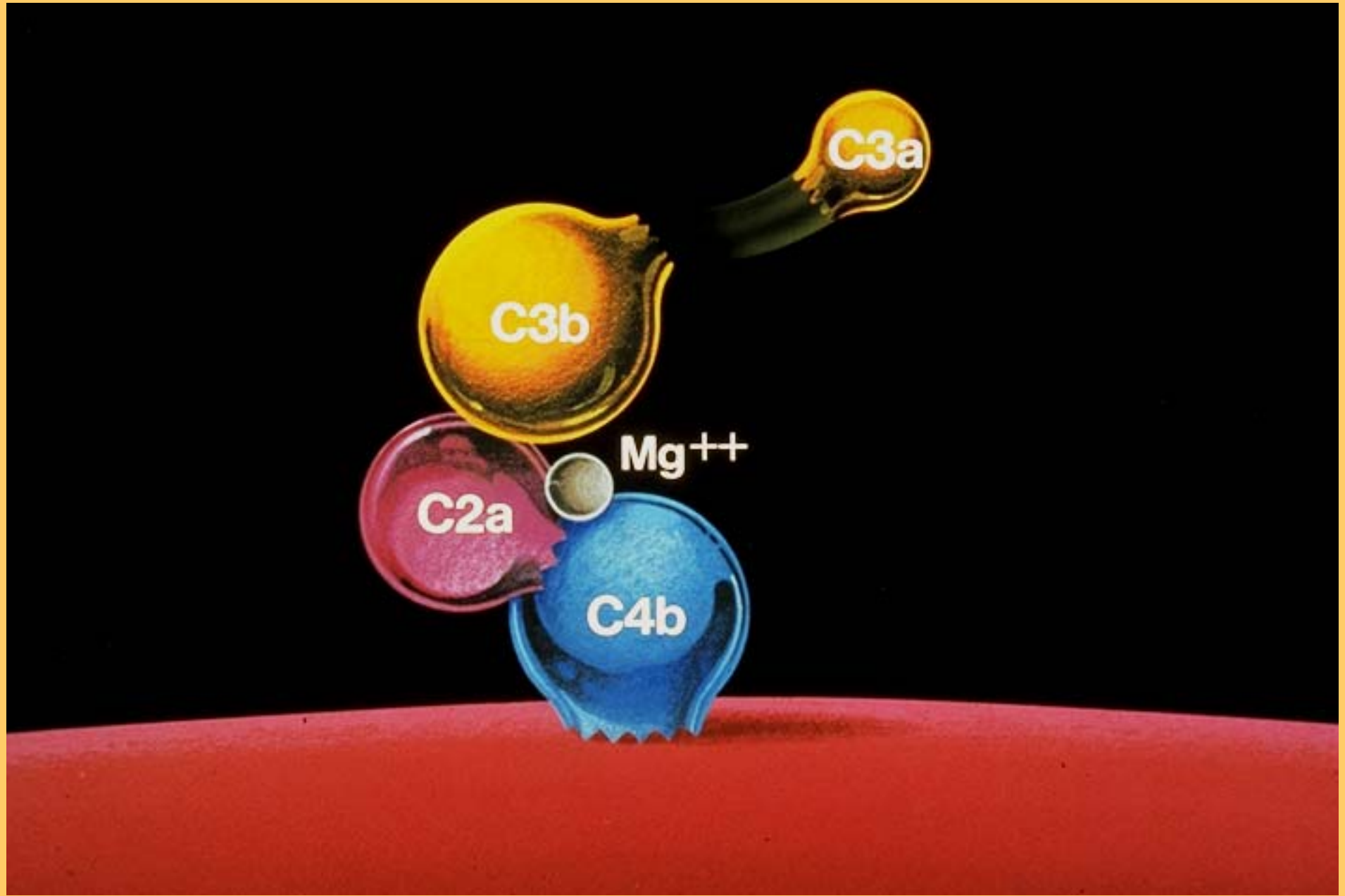


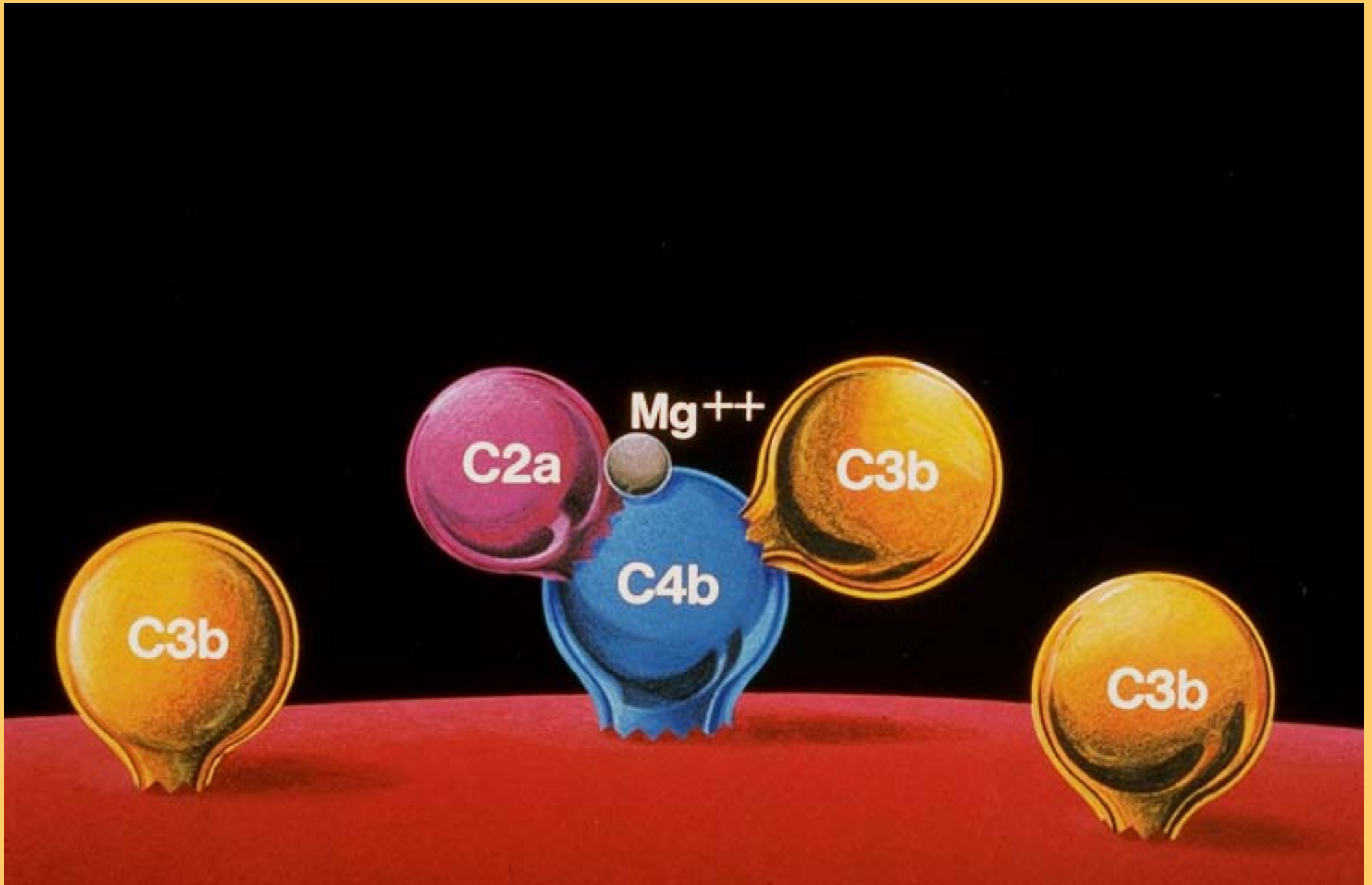




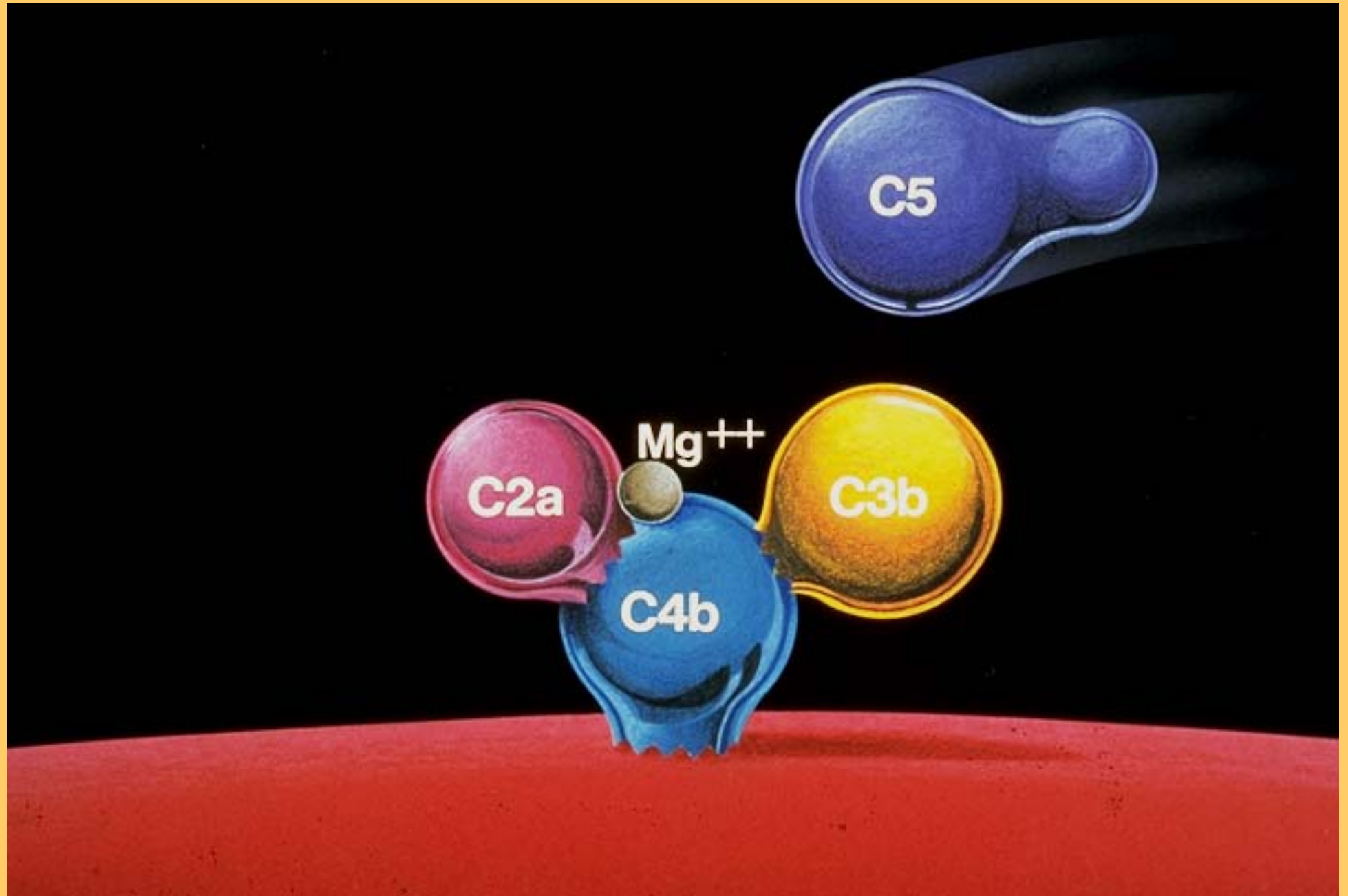




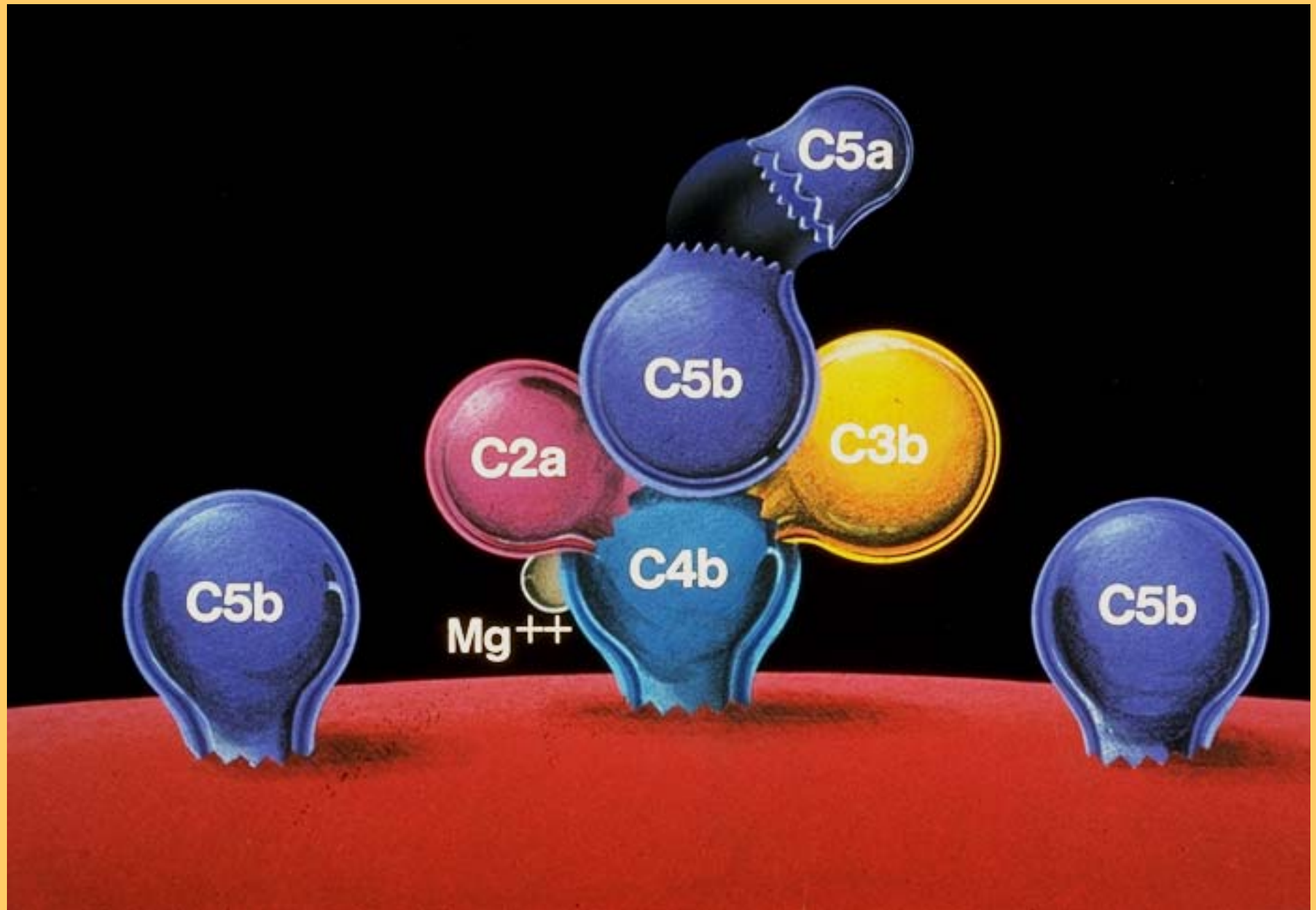




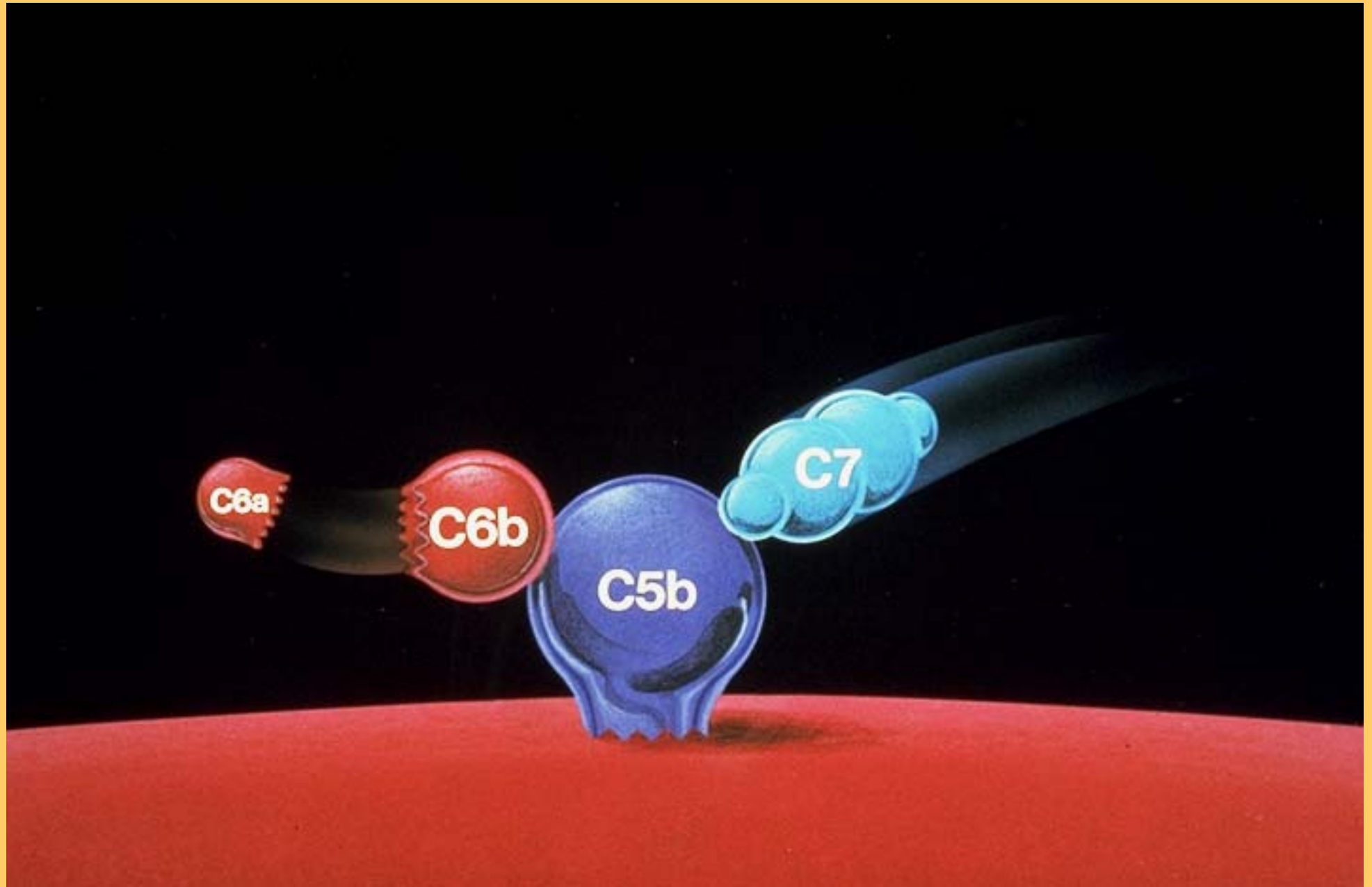


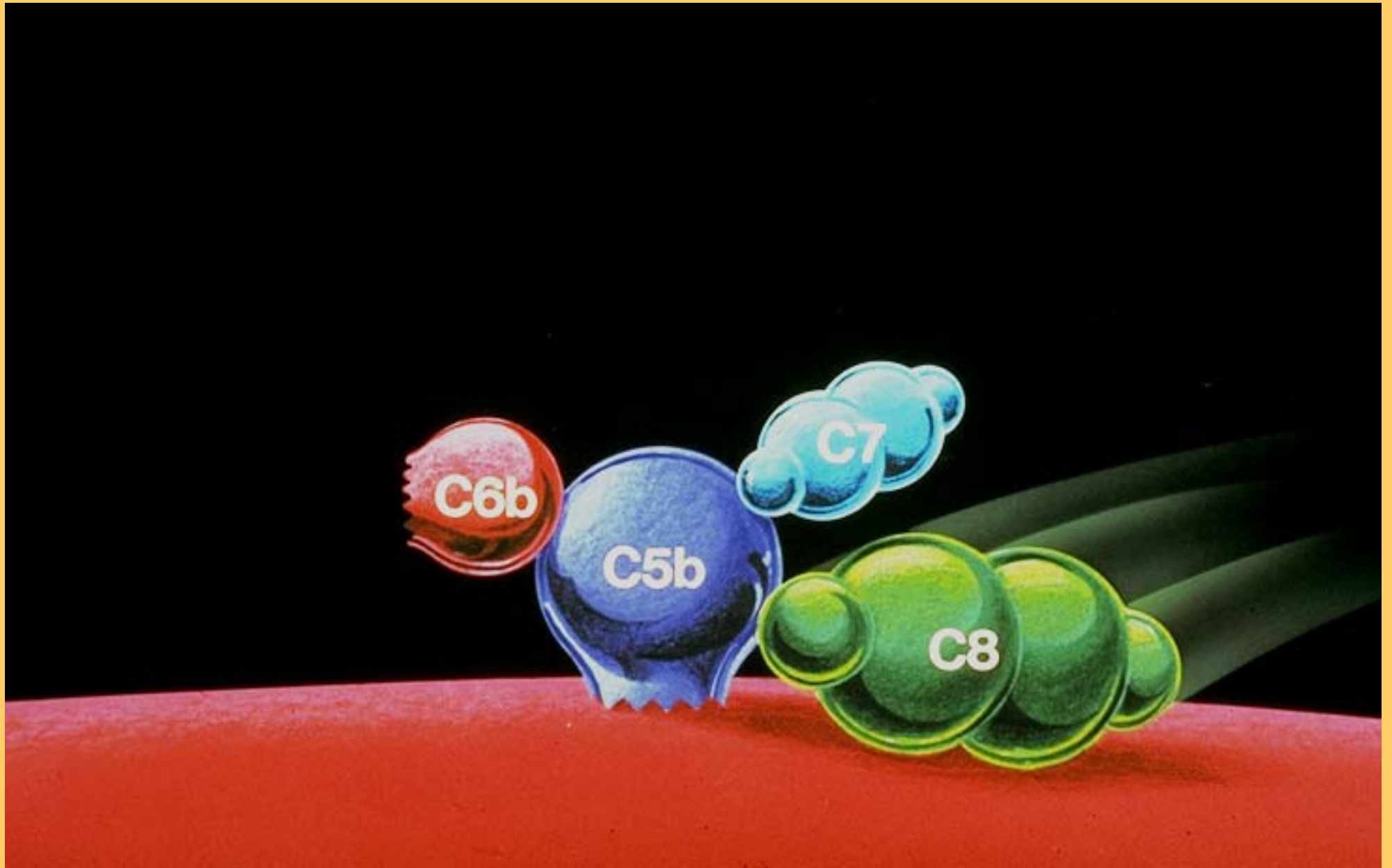


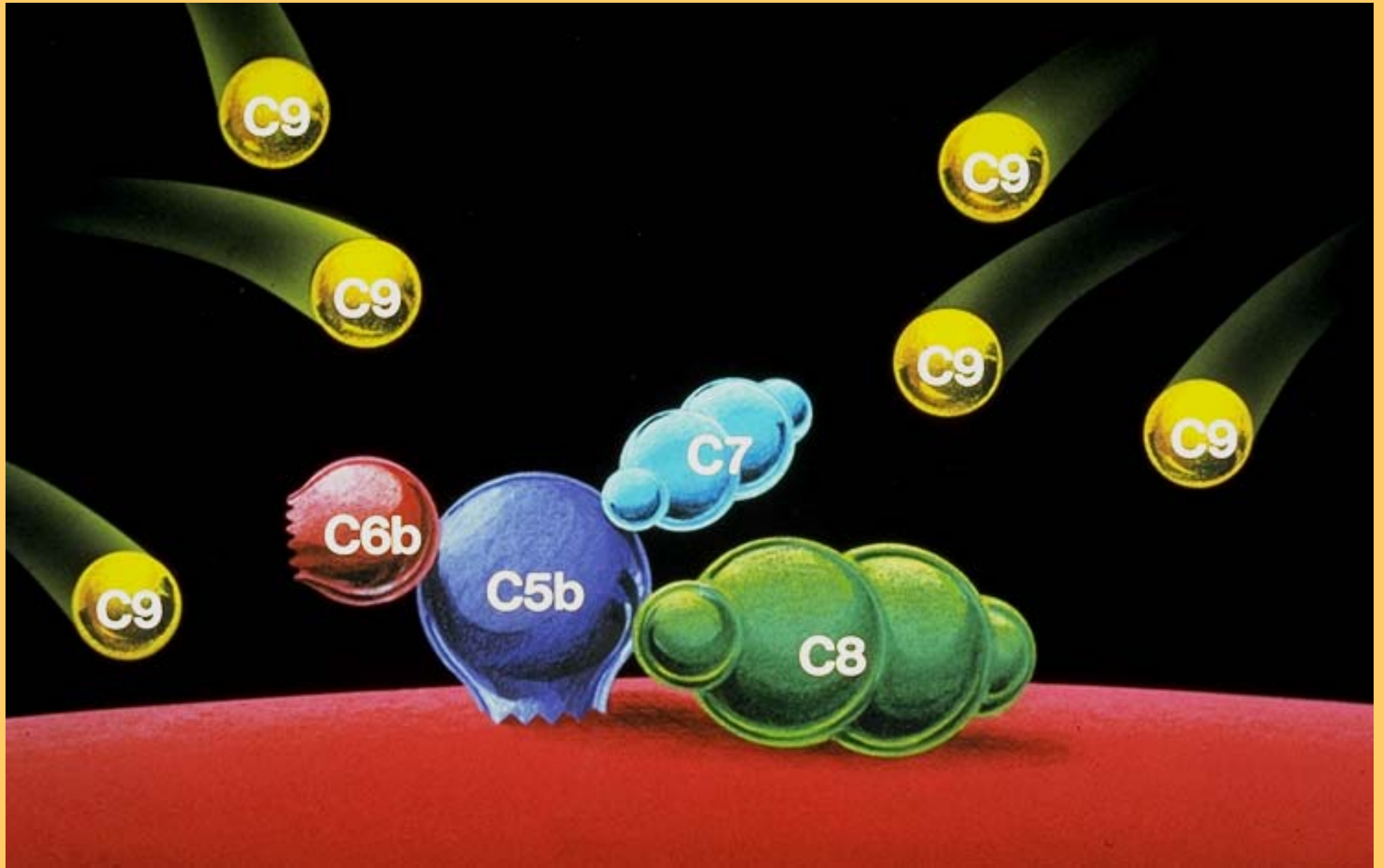






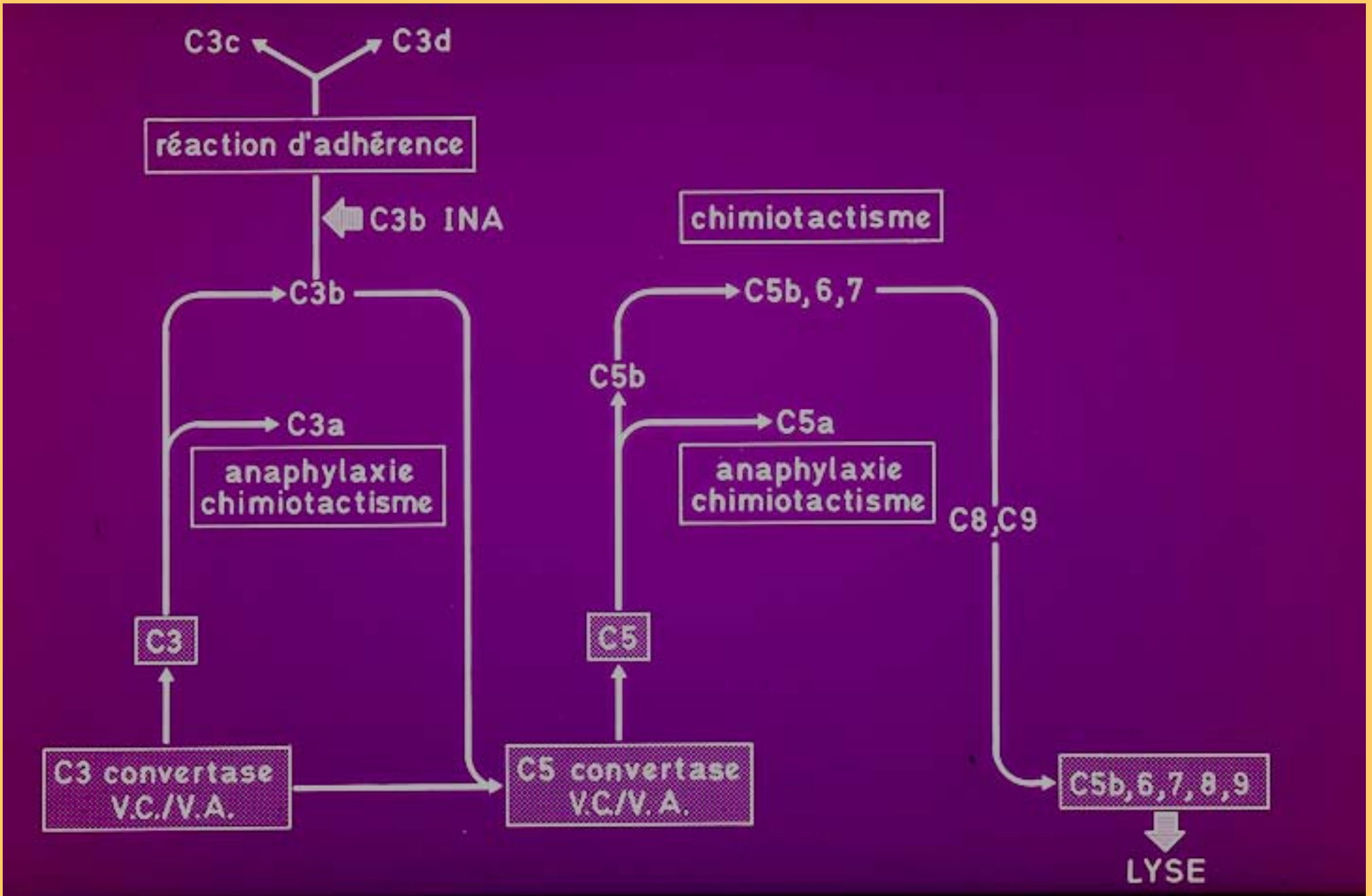














**Voie classique**

**Voie alterne**

**Voie des lectines**

Complexes ag-ac

surfaces bactériennes, LPS

surfaces microbiennes

polysaccharides (zymosan, inuline)

(mannose binding prot)

